



12 luglio 2023

Primo workshop di aggiornamento per i soci Euromobility

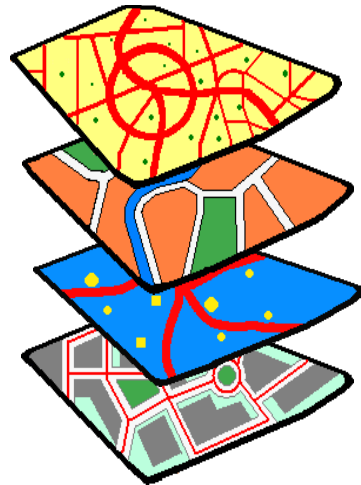
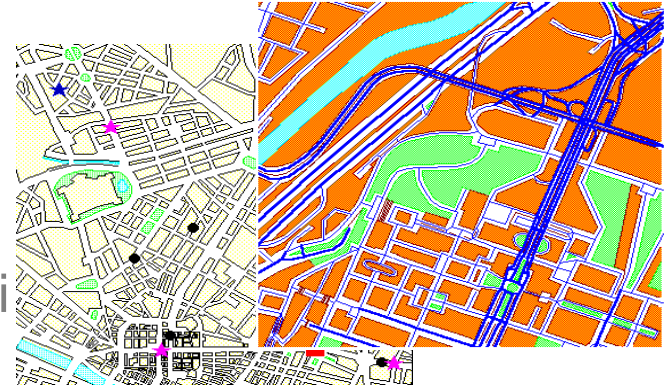
*Strumenti a servizio
del Mobility
Management*
Strumenti GIS

Domenico Giannone

Cos' è il GIS?

E' un sistema che mette in correlazione entità territoriali georeferenziate con suoi specifici attributi.

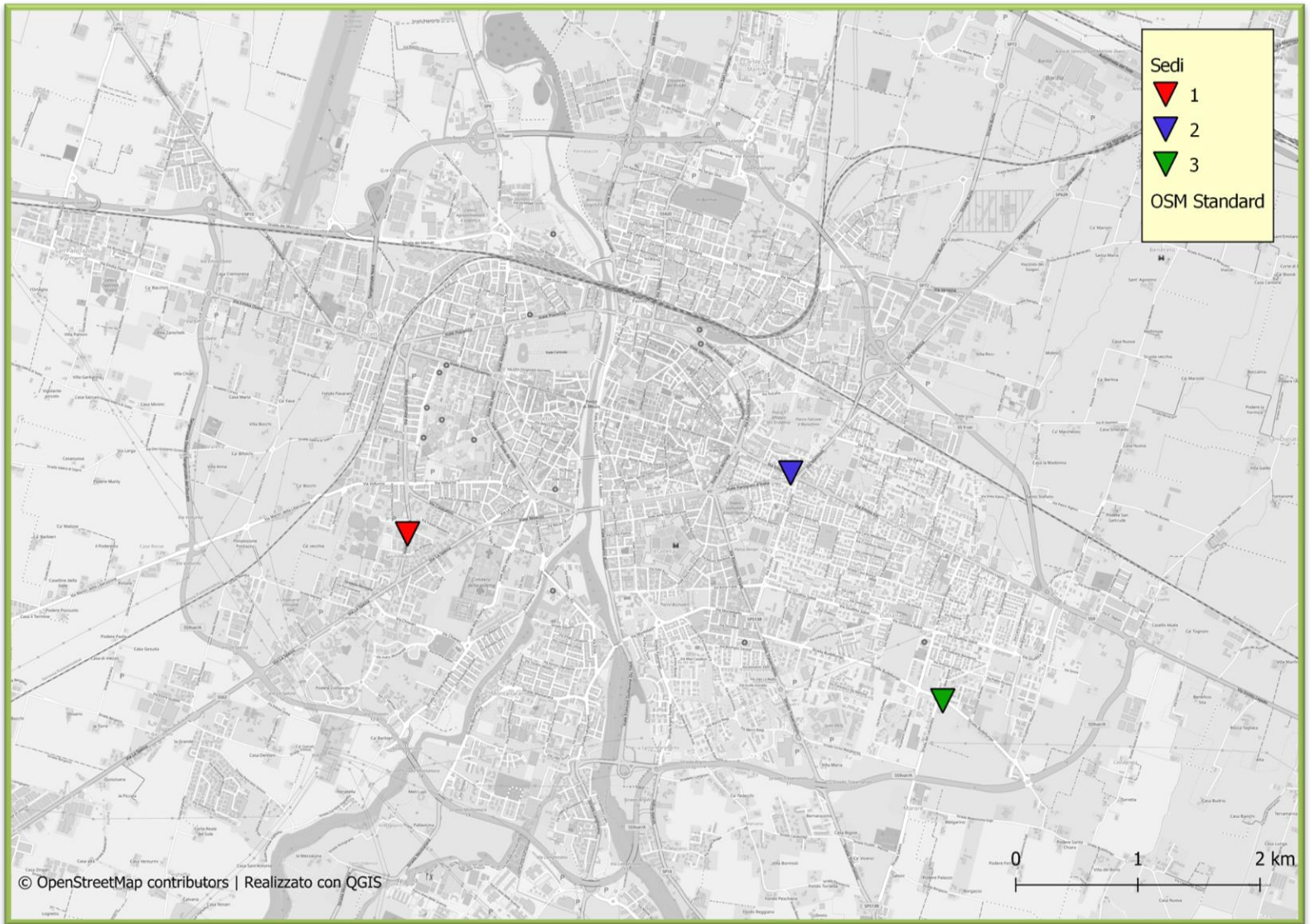
Ad ogni entità corrispondono le reali coordinate geografiche.



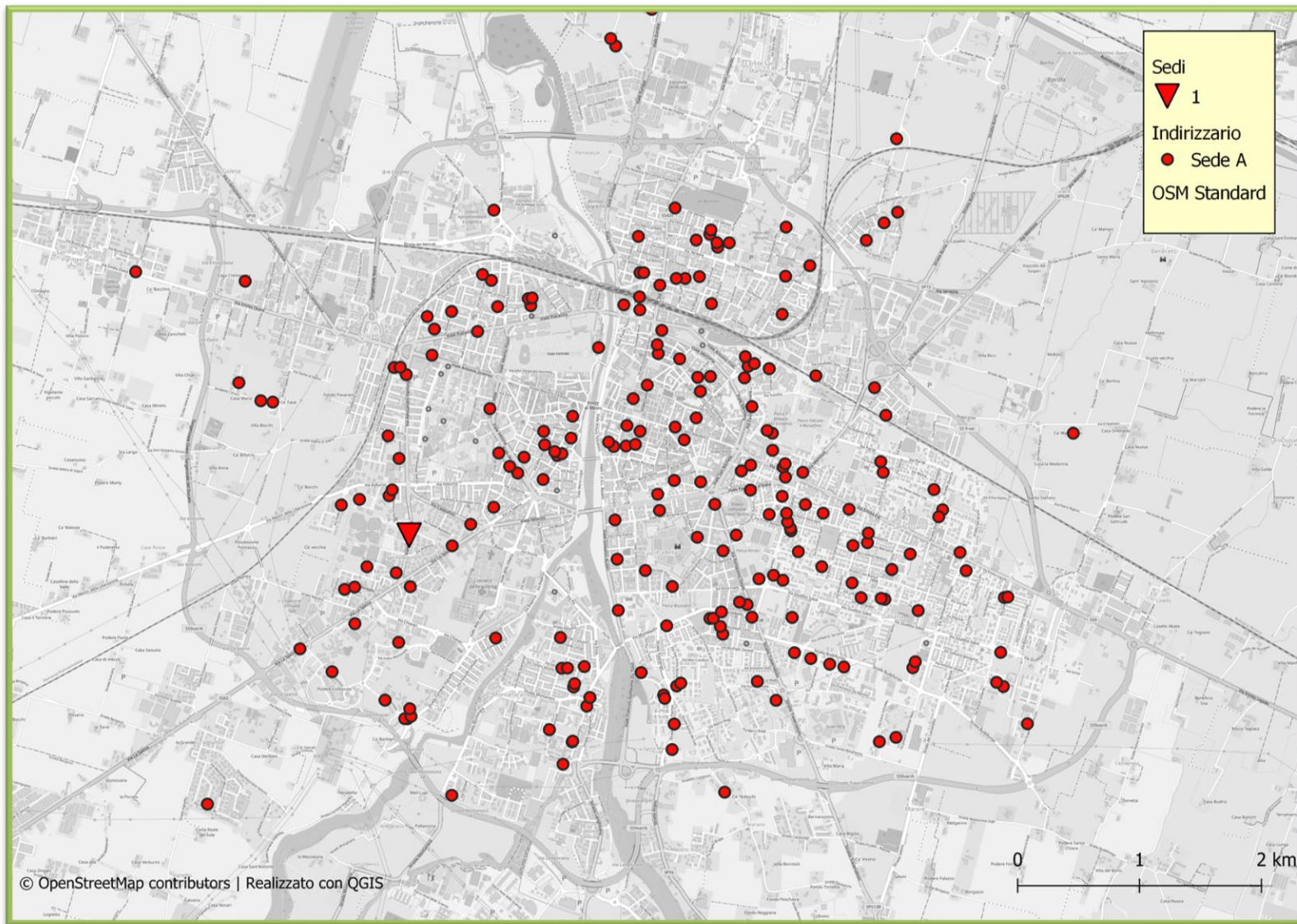
Cosa possiamo analizzare con il GIS:

- Cartografia
- Linee di trasporto pubblico
- Fermate
- Nodi di interscambio modale
- Piste Ciclabili
- Servizi di sharing
- ...

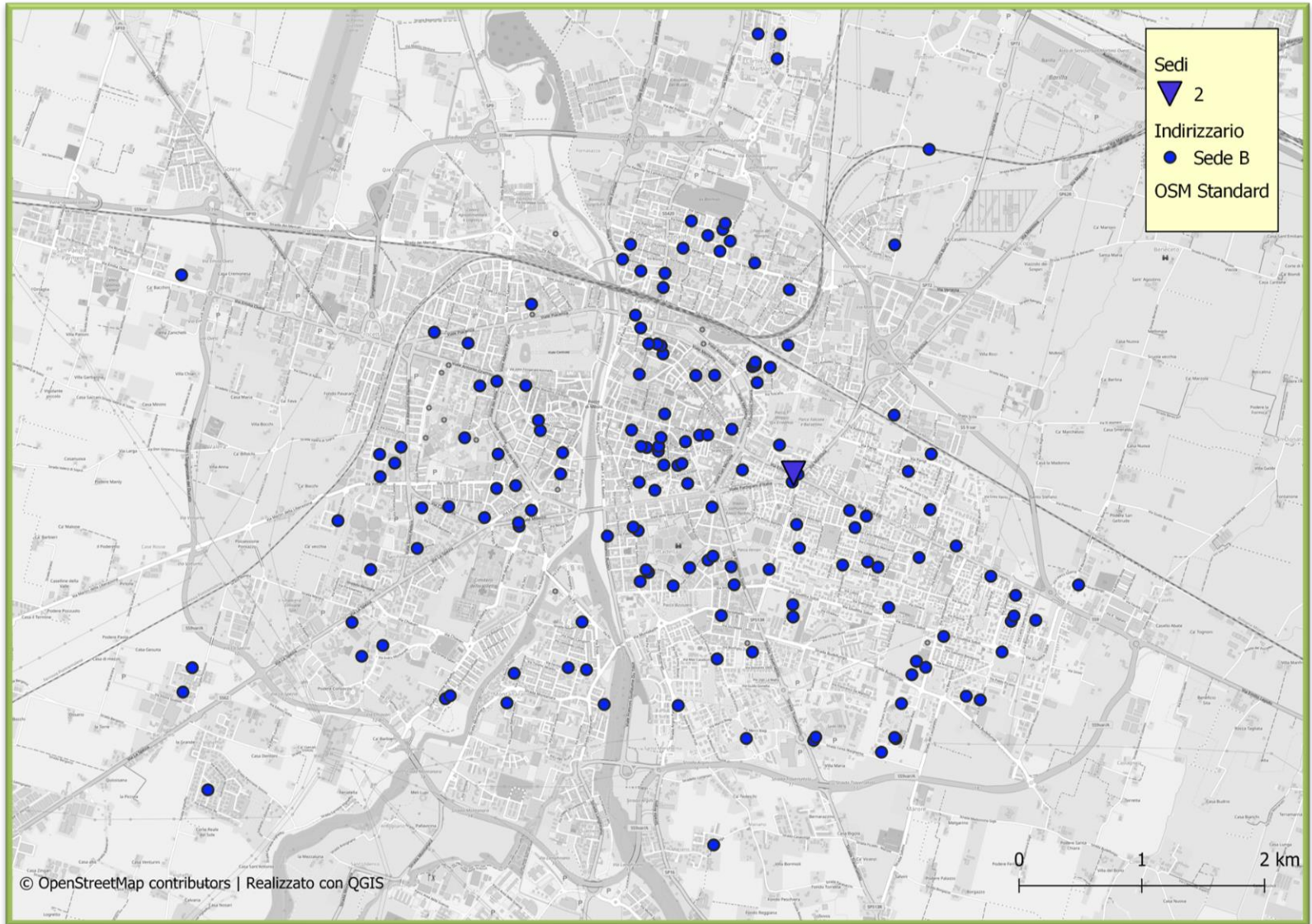
Geolocalizzazione Sedi



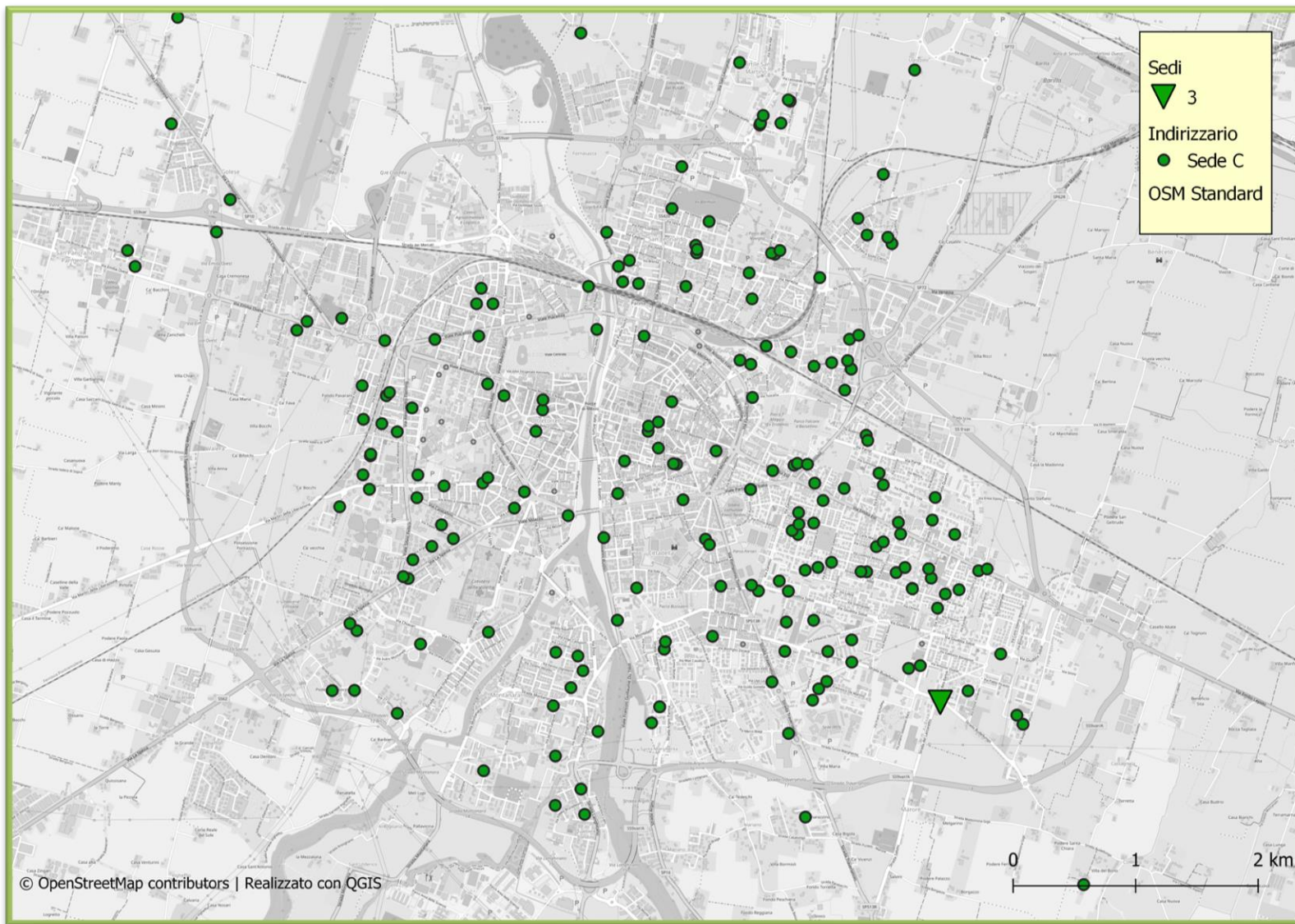
Geolocalizzazione Dipendenti Sede 1



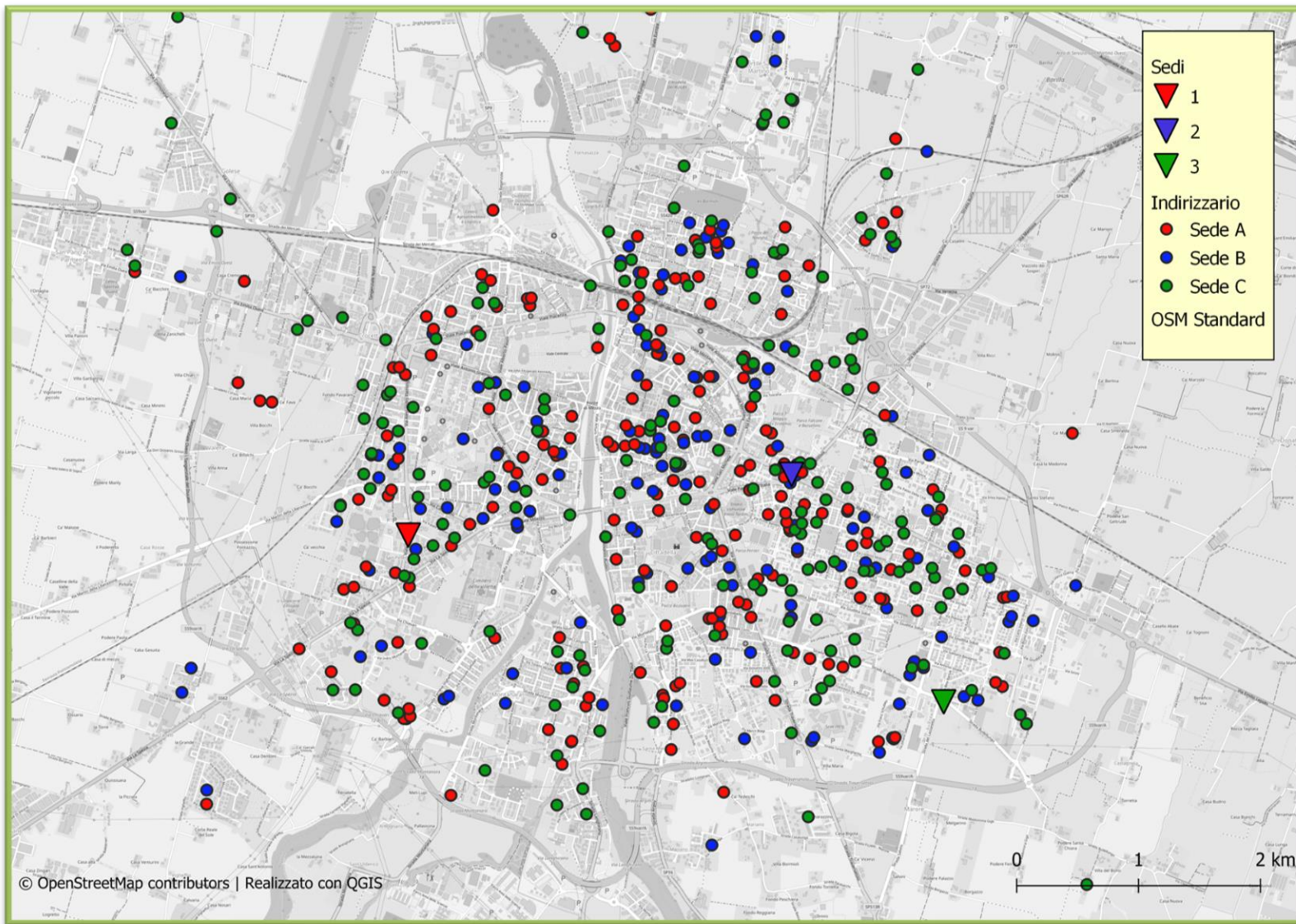
Geolocalizzazione Dipendenti Sede 2



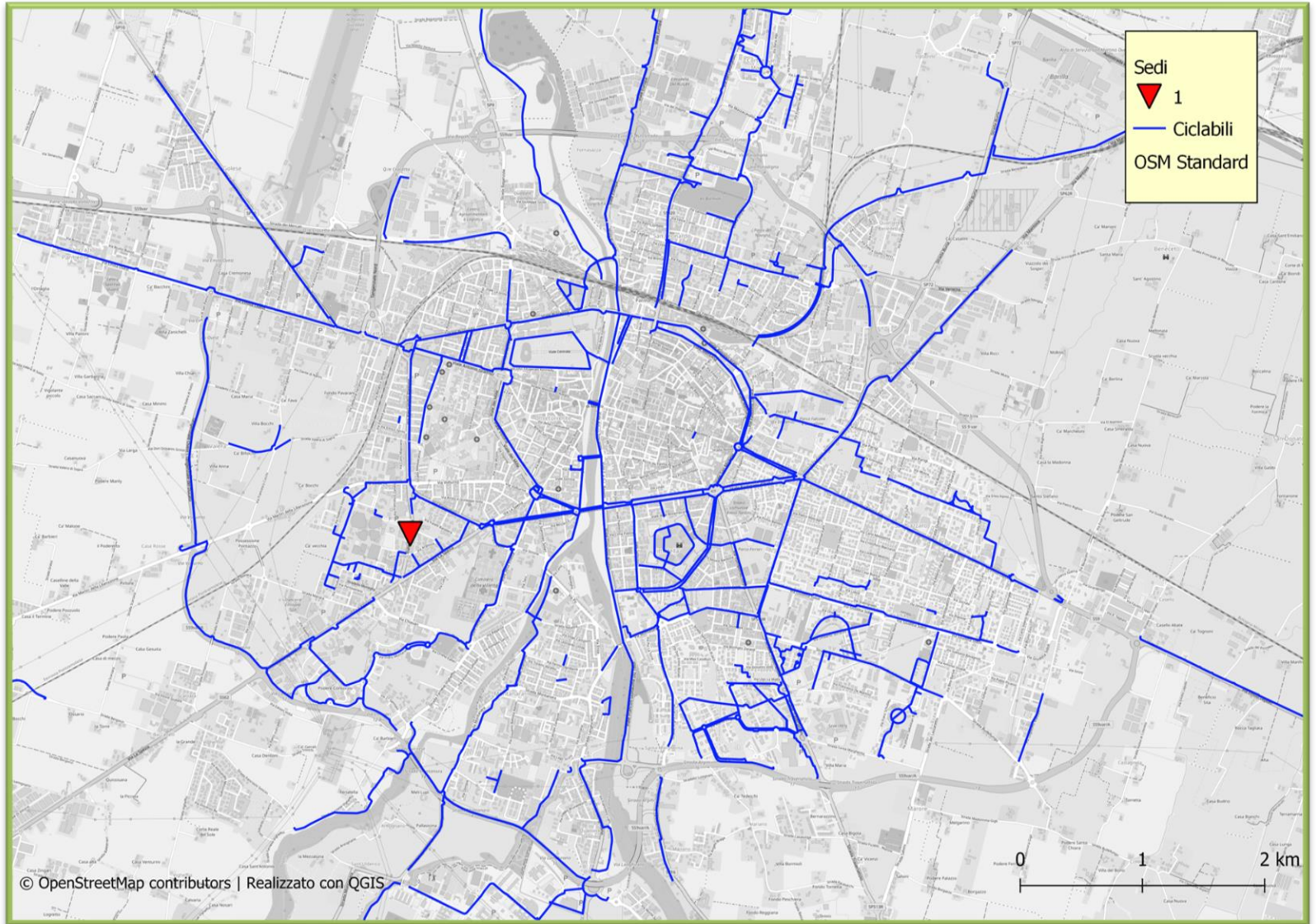
Geolocalizzazione Dipendenti Sede 3



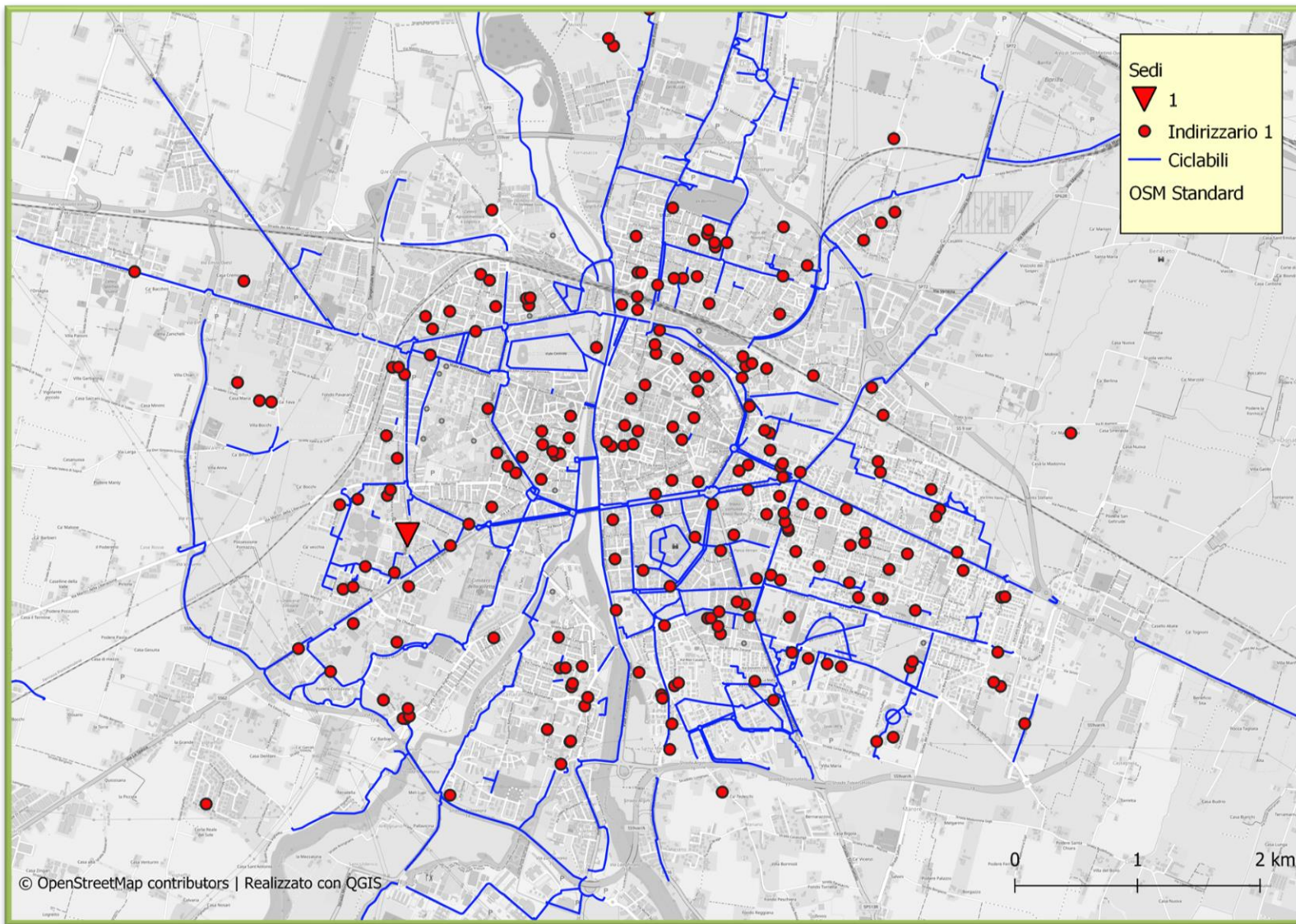
Geolocalizzazione Sedi con dipendenti



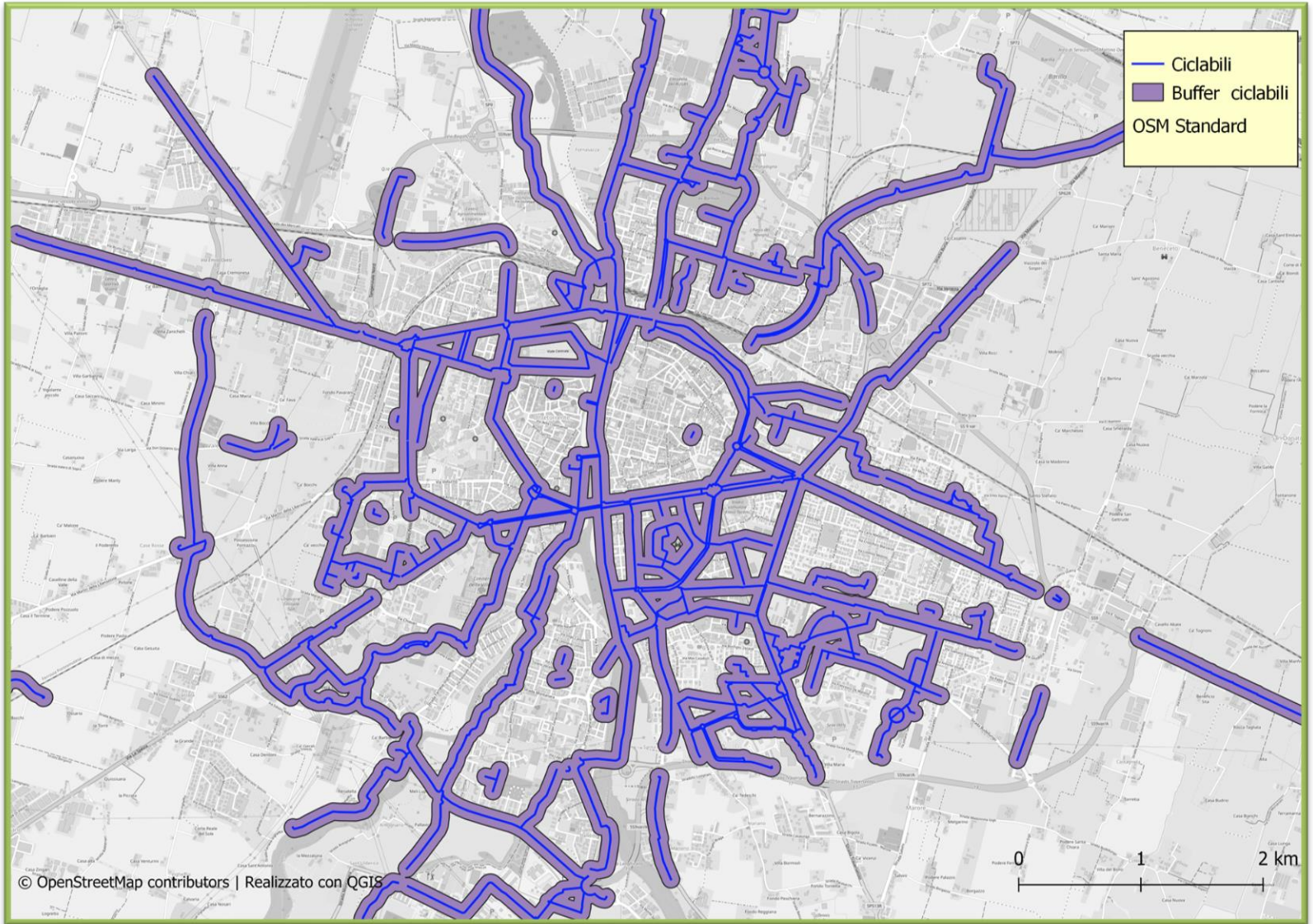
Analisi ciclabilità sede



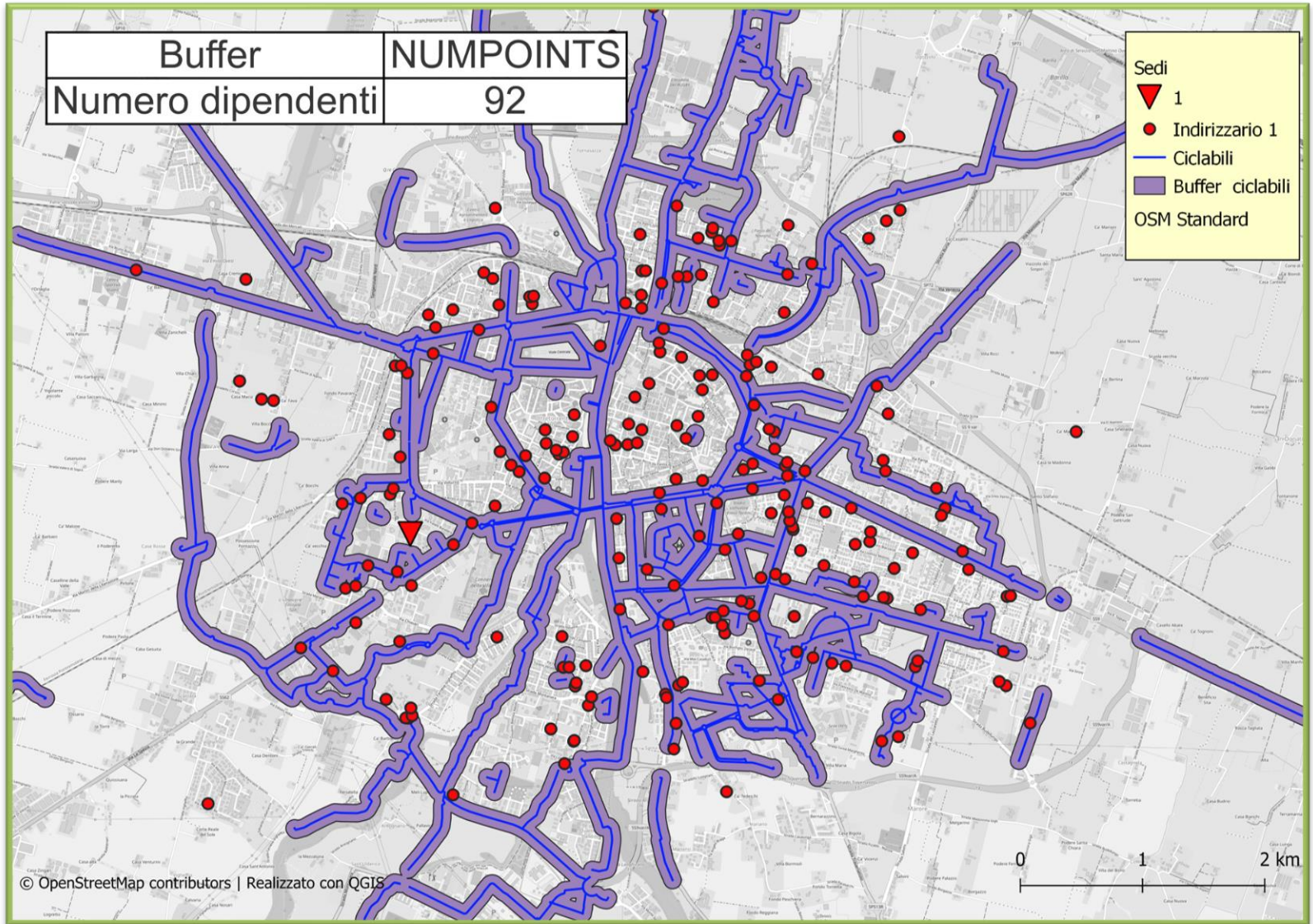
Analisi ciclabilità sede con dipendenti



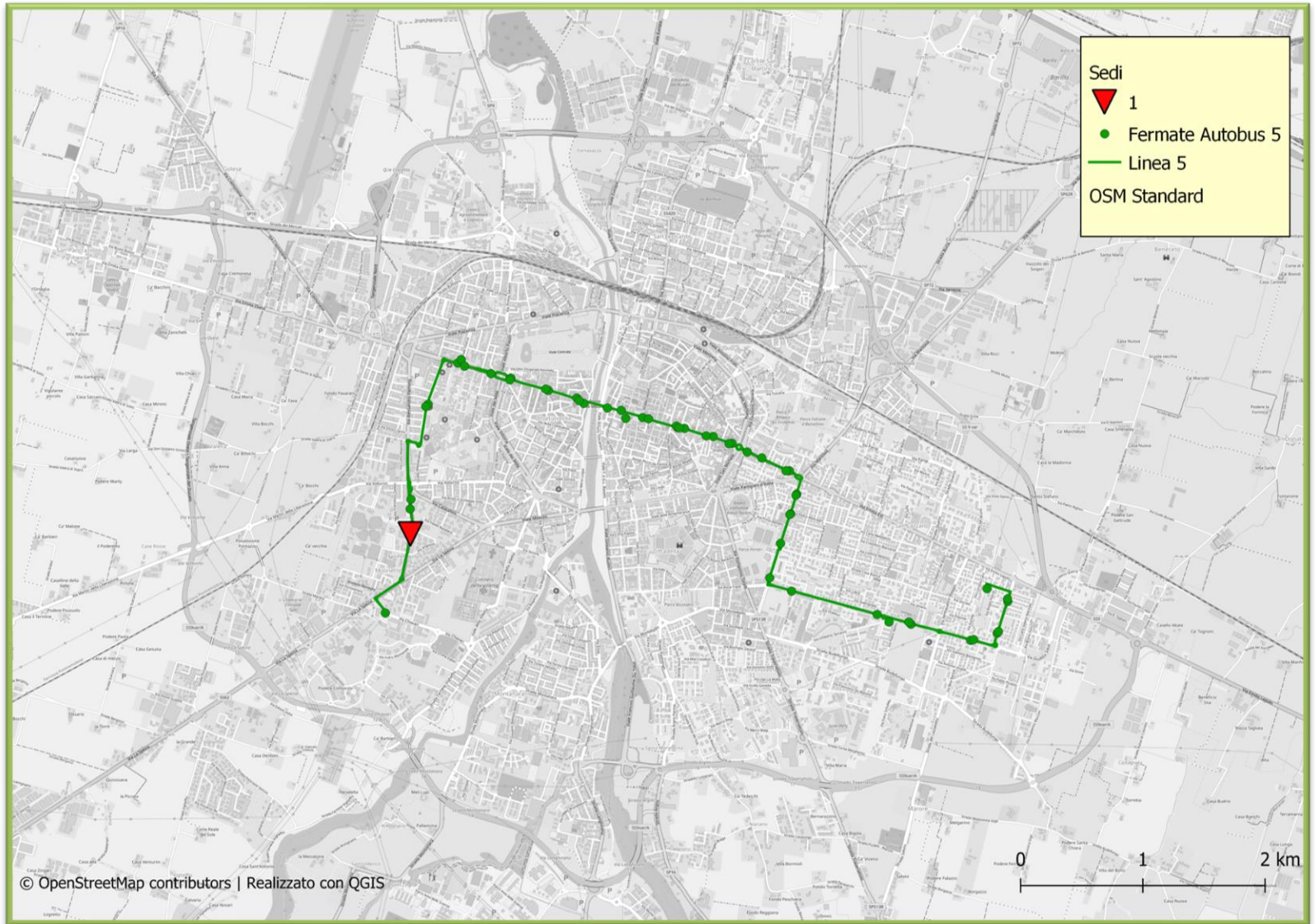
Buffer ciclabili (100m)



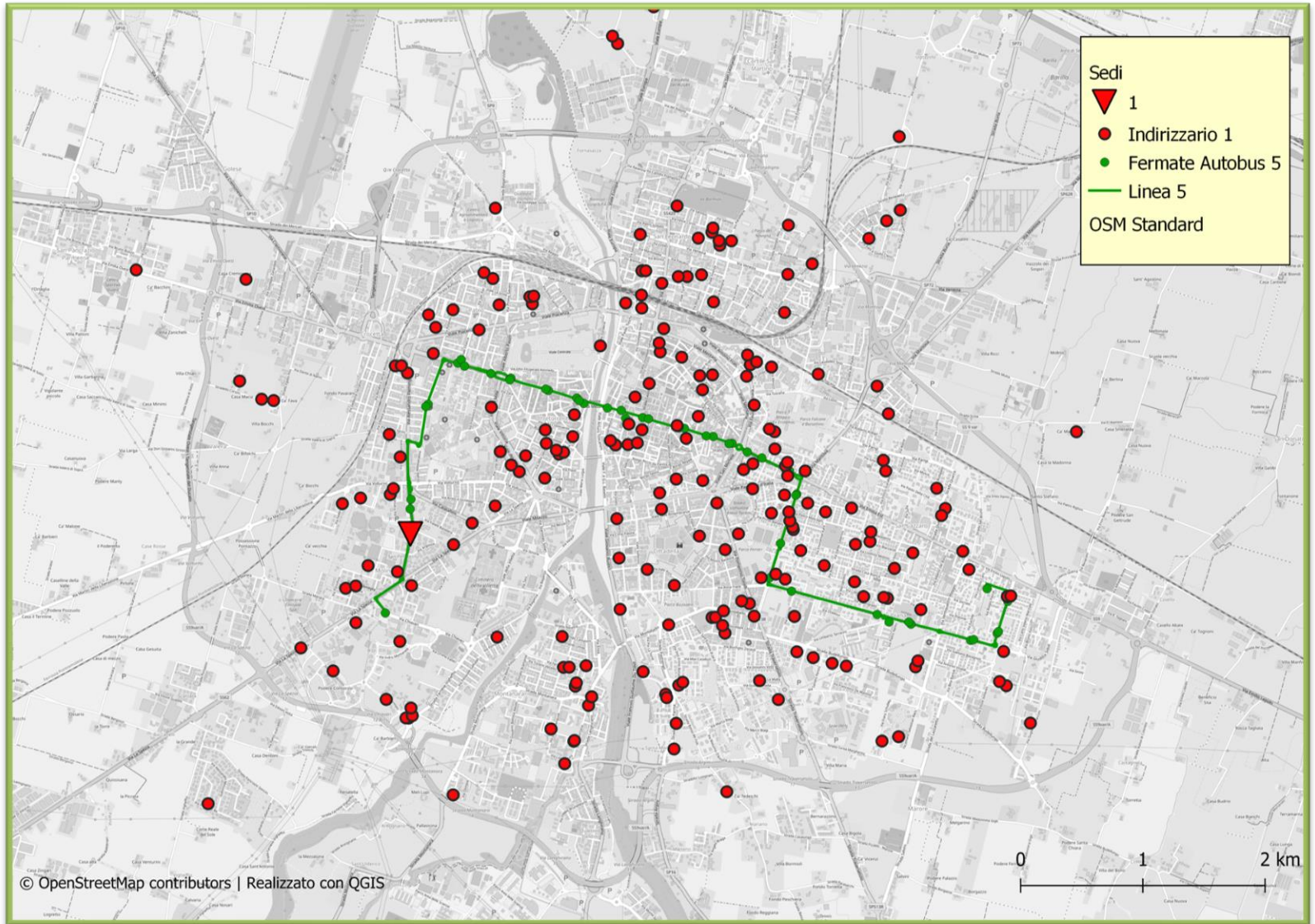
Count nel buffer delle ciclabili (100m)



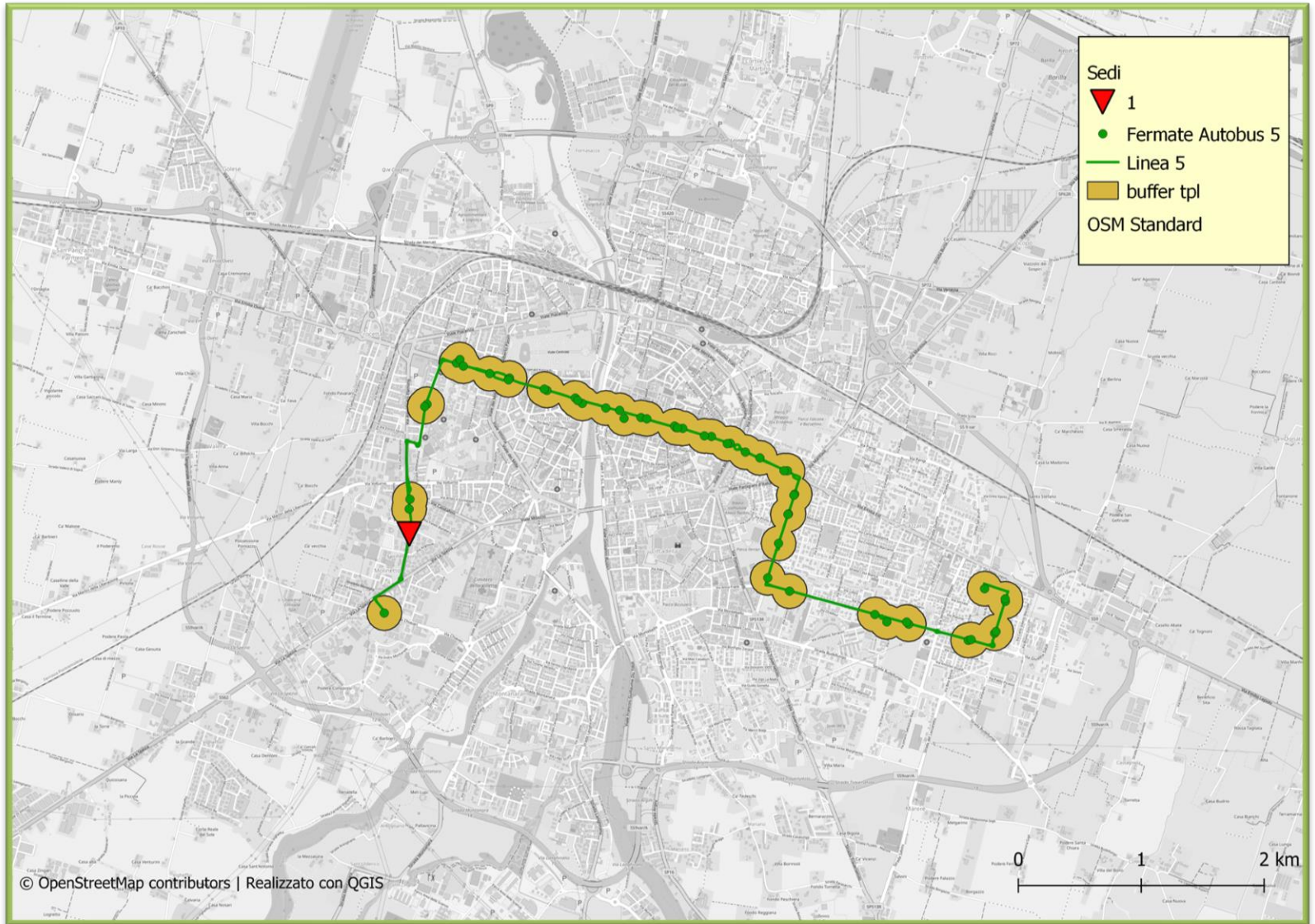
Analisi linea TPL



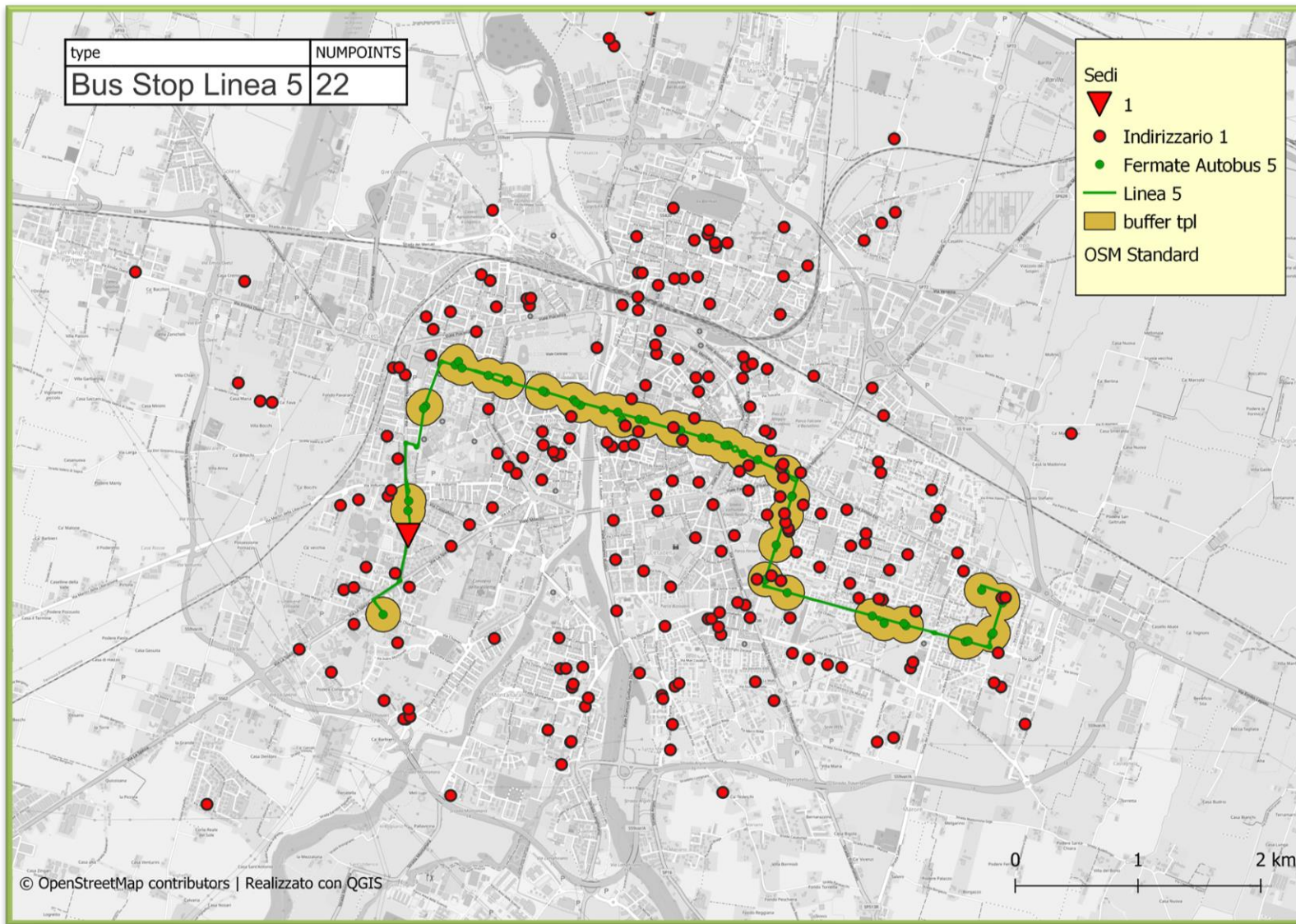
Analisi linea TPL



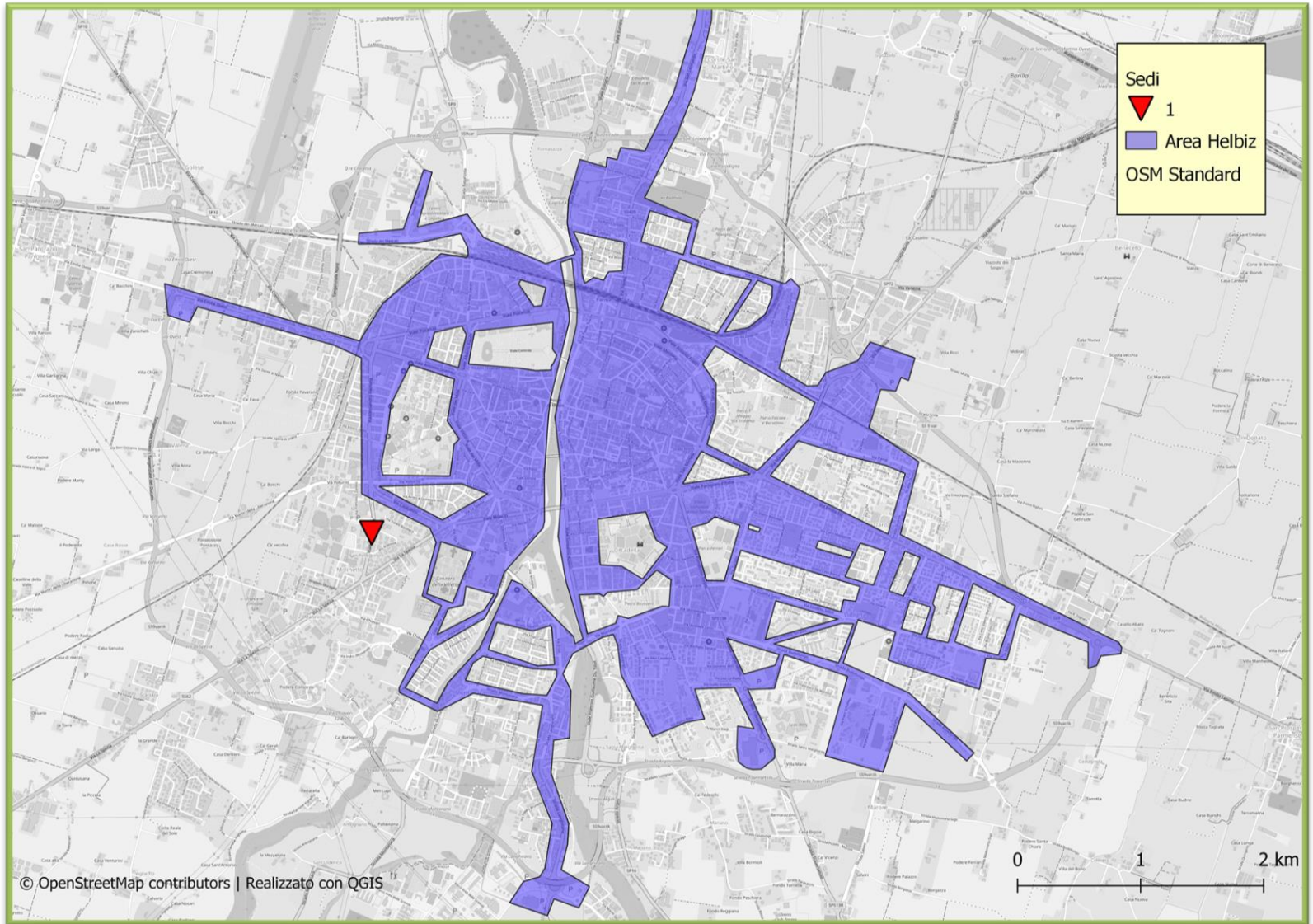
Buffer fermate autobus linea (200m)



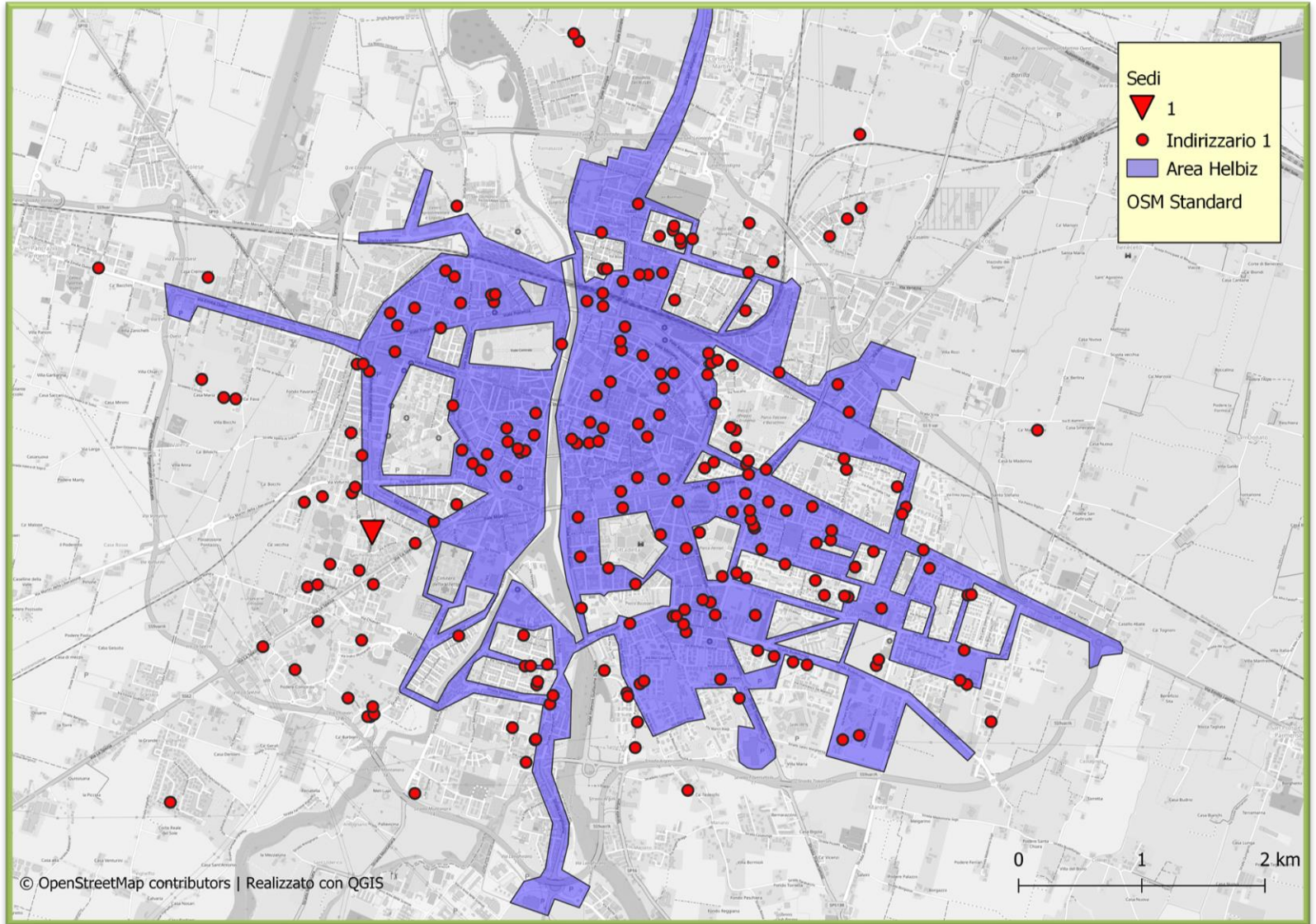
Count nel buffer delle fermate (200m)



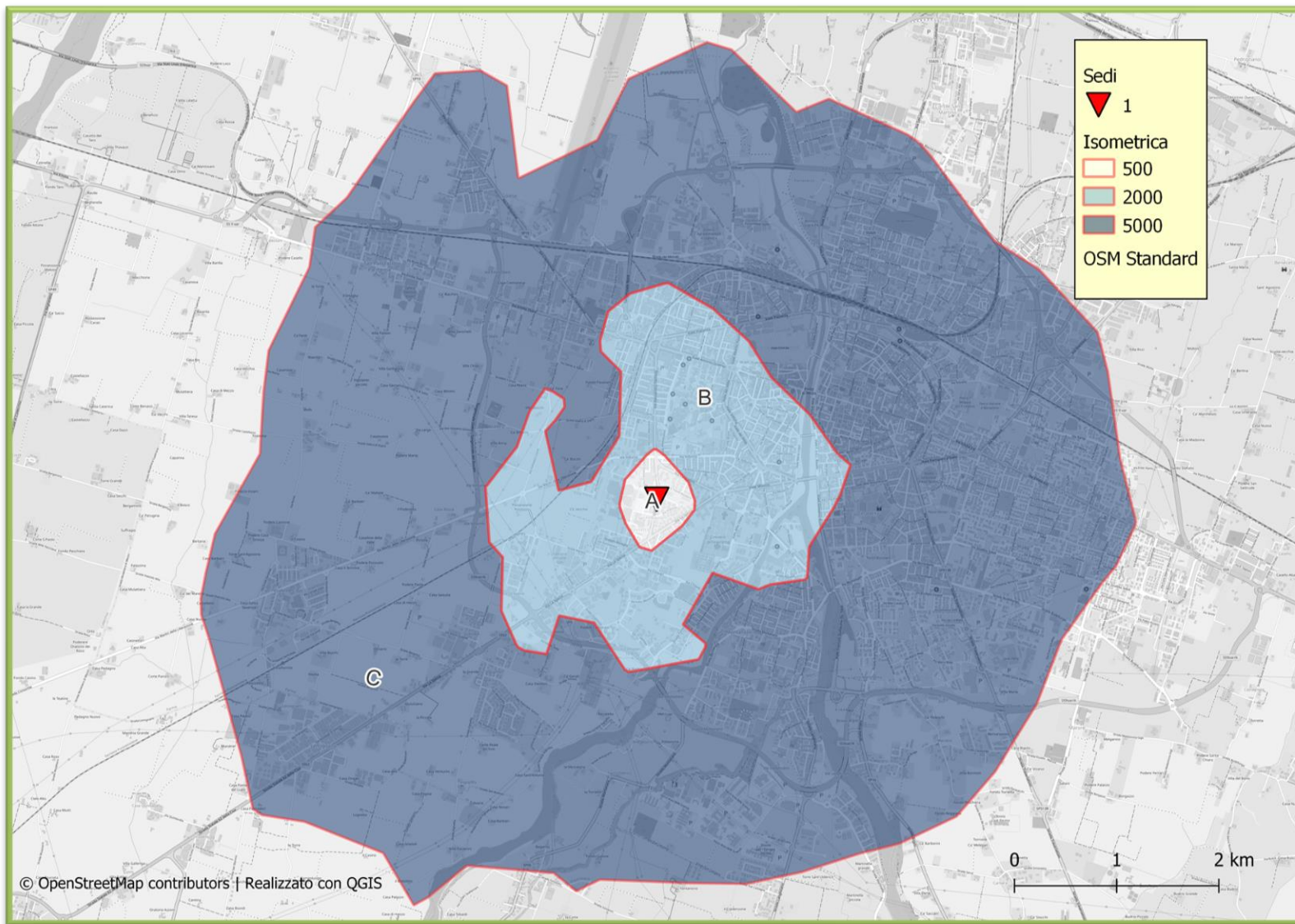
Servizi di sharing free floating



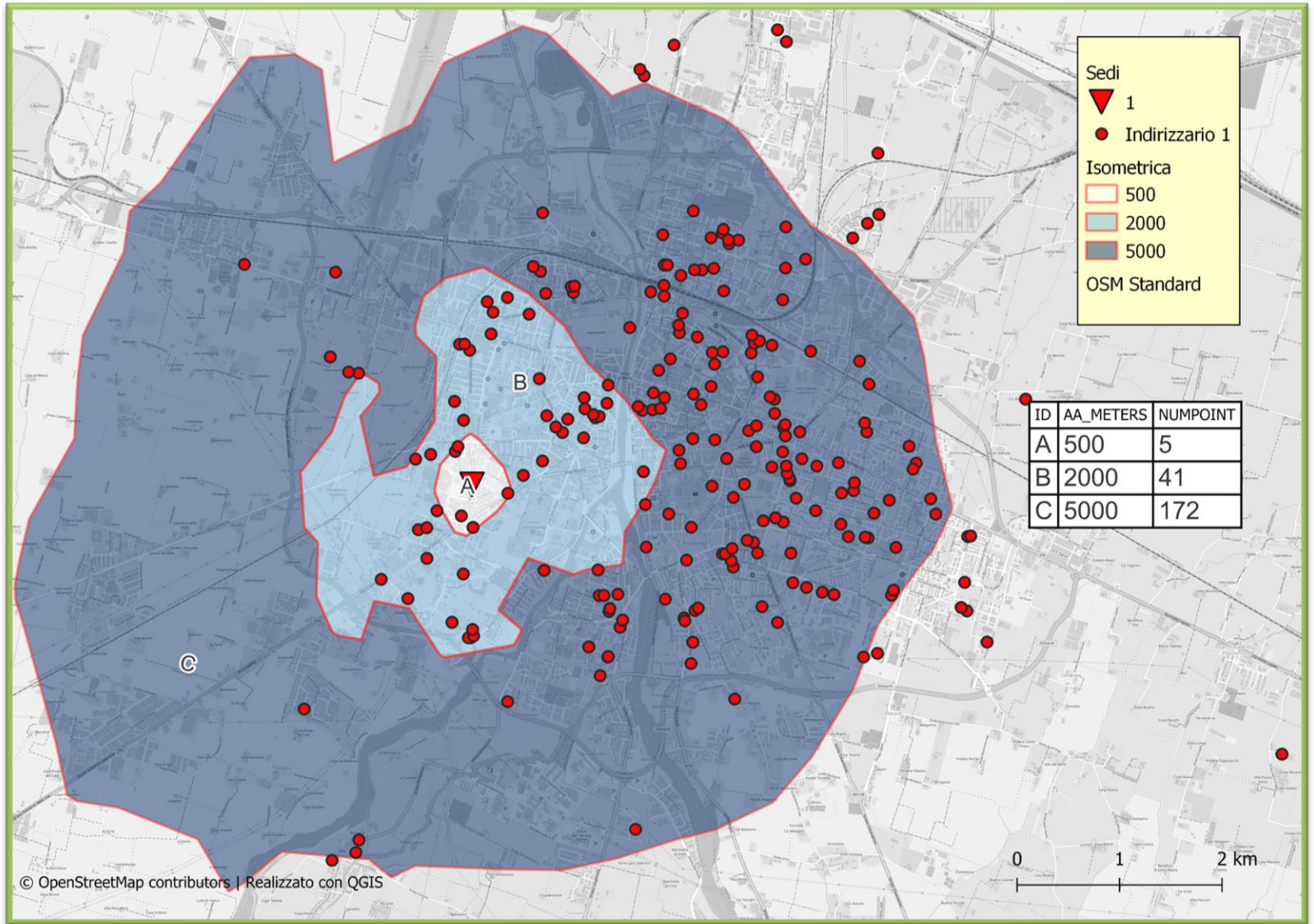
Servizi di sharing free floating



Isometrica dall'entrata della sede (500m, 2000m e 5000m)

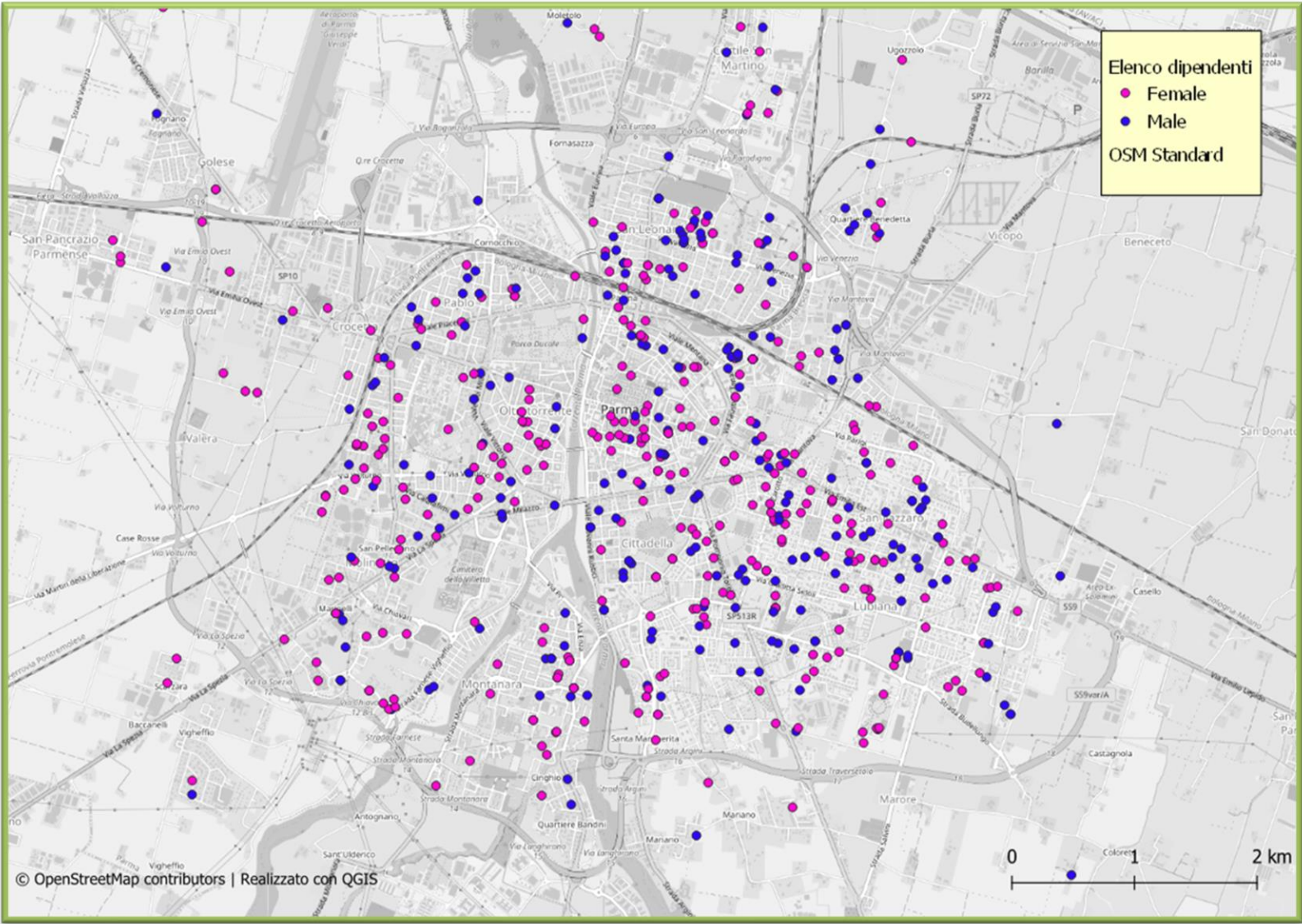


Count nel nell'isometrica



Geolocalizzazione caratterizzata

Euromobility



Geolocalizzazione graduata

